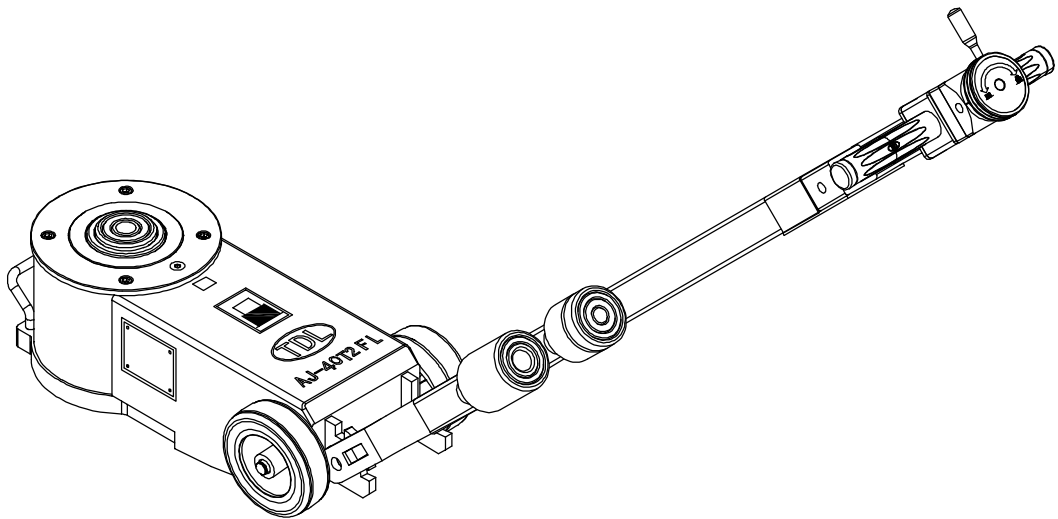


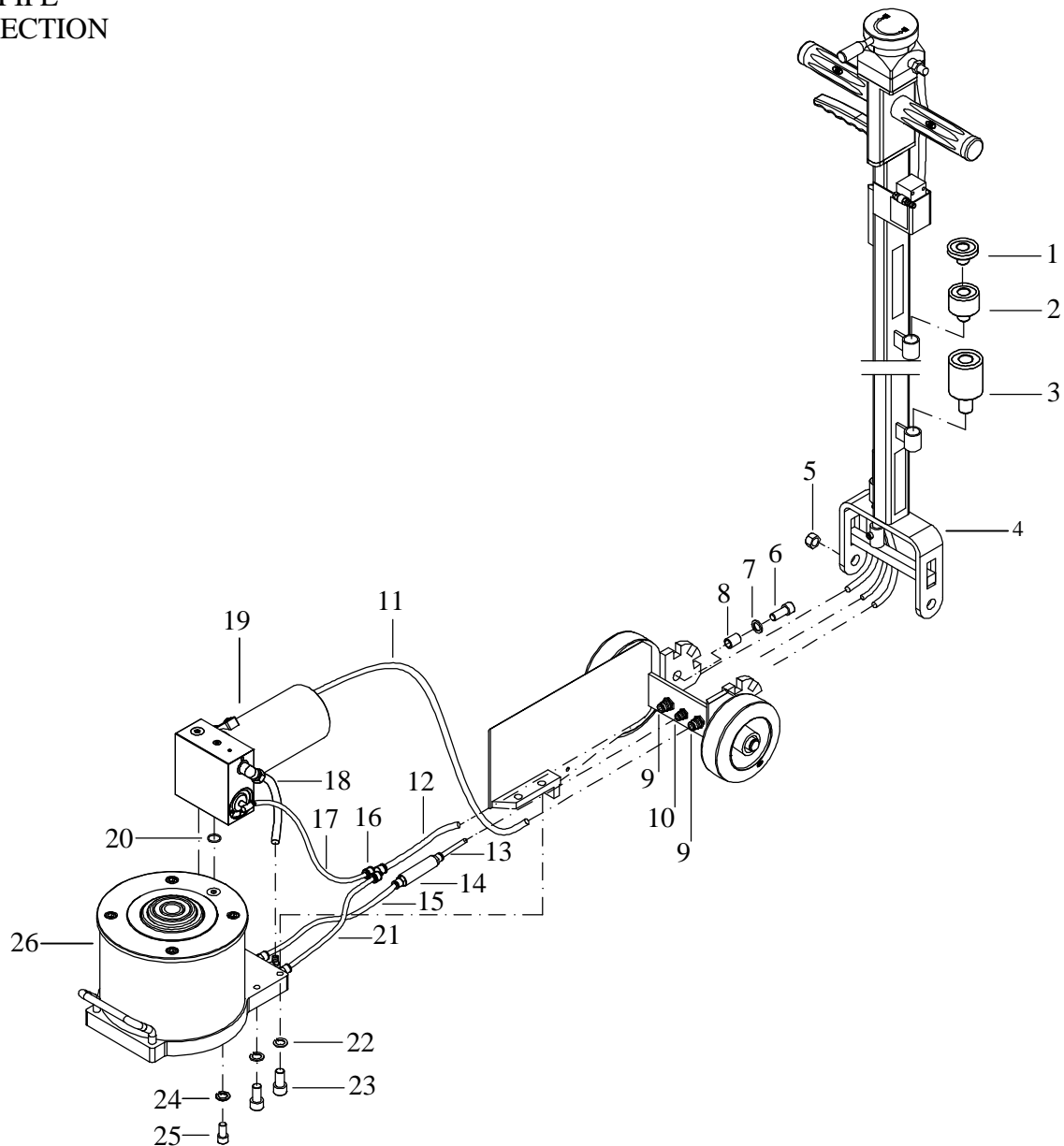
# Air-operated Hydraulic Pressure Jack

## AJ-40T2FL

(Operation instruction)



Minimum Height:150mm  
Hoisting Height:140mm

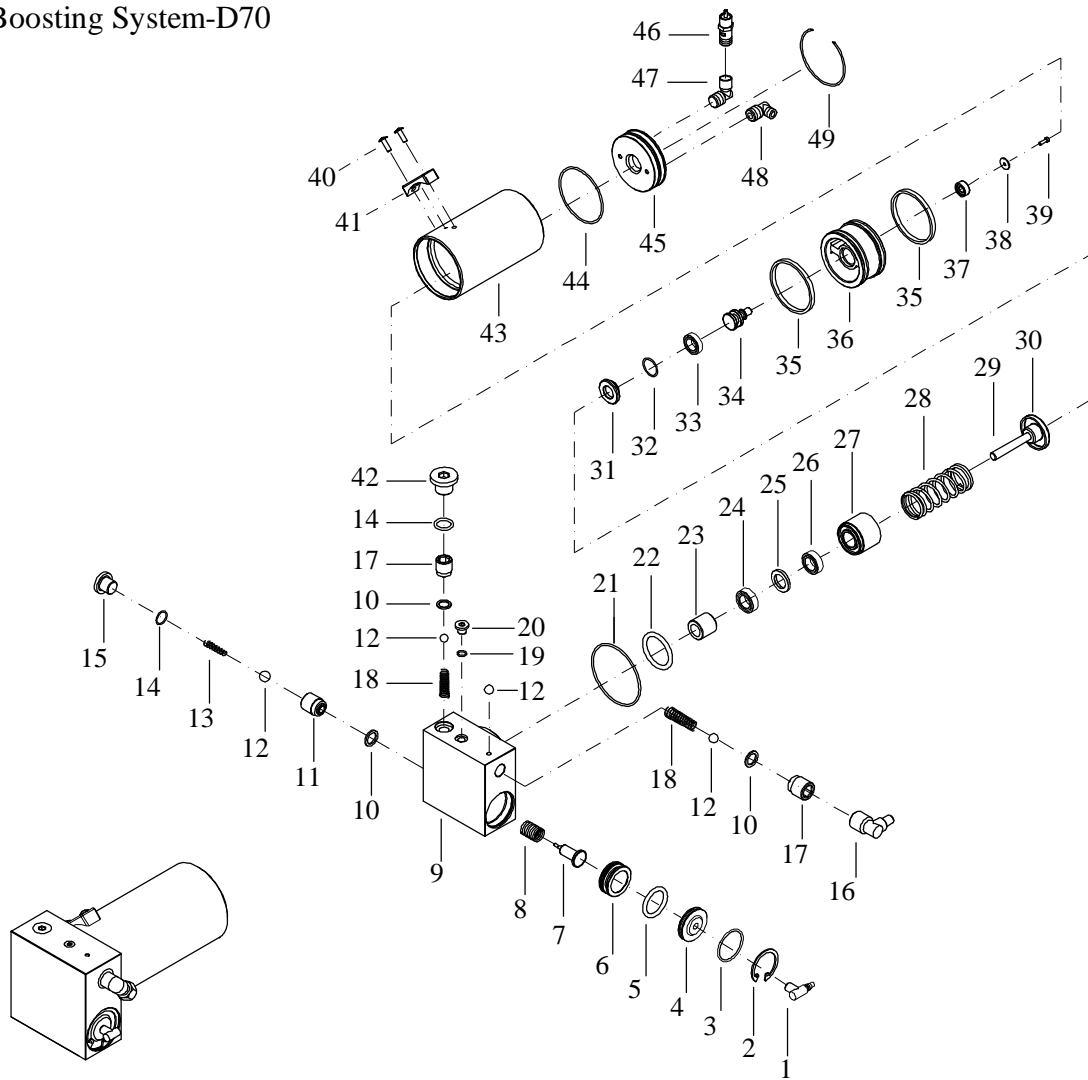
**WINDPIPE  
CONNECTION**


Code	No.	PART NAME	QTY	Code	No.	PART NAME	QTY	Code	No.	PART NAME	QTY
1	02001	Extension Rod 20mm	1	10	Z24	Adaptor	1	19	D70	Boosting System-D70	1
2	02009	Extension Rod 60mm	1	11	Q1	Windpipe	1	20	M7	O Ring	1
3	02006	Extension Rod 110mm	1	12	Q18	Windpipe	1	21	Q16	Windpipe	1
4	FG1250	Operation Rod(FL)	1	13	Q17	Windpipe	1	22	J6	M10 Spring Gasket	4
5	J26	M10 Bolt	2	14	TV5	Oil mist resistance pot	1	23	J4	M10 Screw	4
6	J24	M10 Gasket	2	15	Q14	Windpipe	1	24	J5	M8 Spring Gasket	4
7	J25	M10 Gasket	2	16	Z22	Adaptor	1	25	J3	M8 Screw	4
8	FG2	Screw thread insert	2	17	Q15	Windpipe	1	26	40T2FL-1	40T2FL Oil Cylinder	1
9	Z25	Adaptor	2	18	Q19	Windpipe	1				

**AJ-40T2FL EXPLODED VIEW**

Picture A

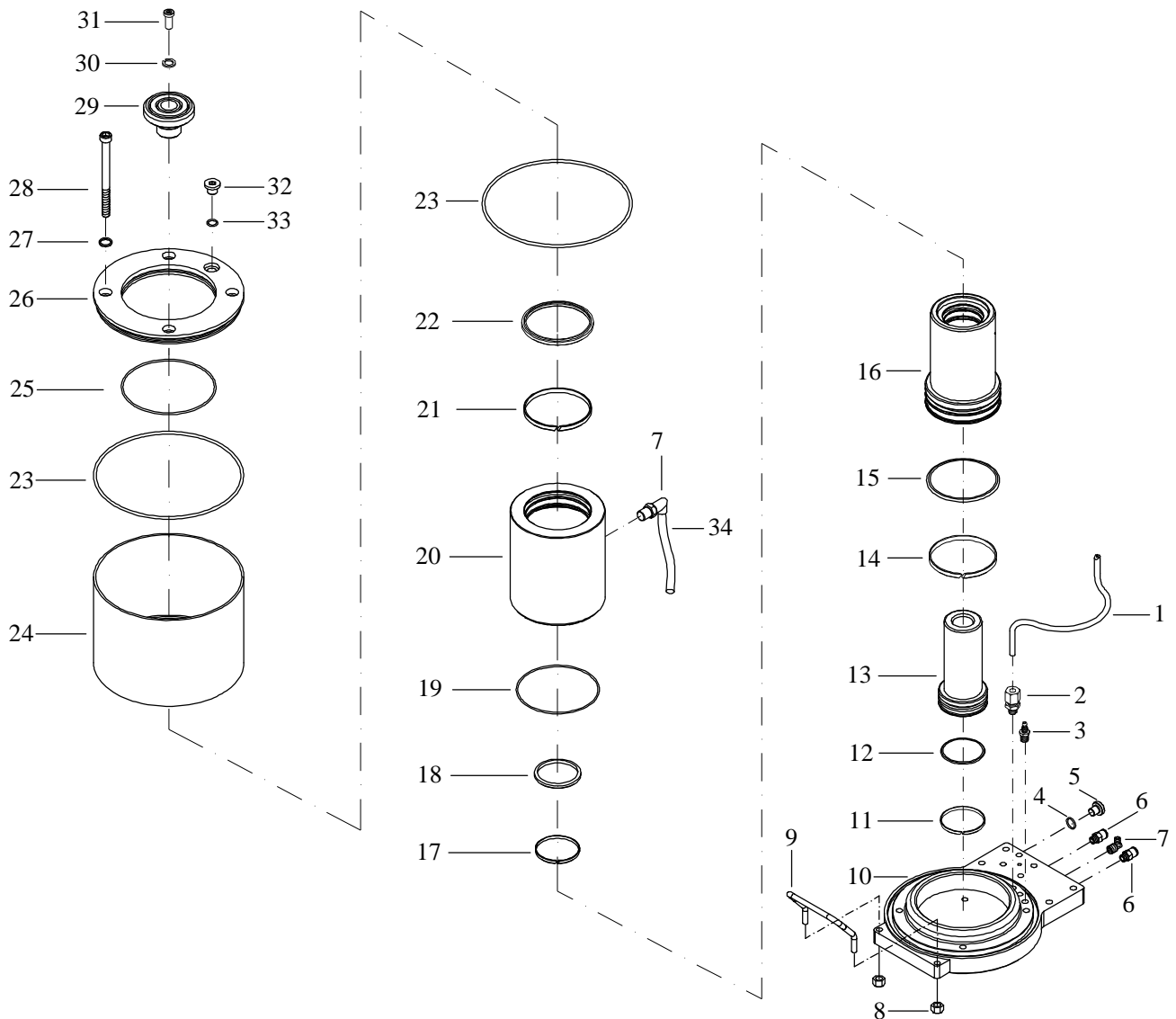
## Boosting System-D70



Code	No.	PART NAME	QTY	Code	No.	PART NAME	QTY	Code	No.	PART NAME	QTY
1	Z10	Adaptor	1	18	W11	Spring	2	35	HS2	Glgy Ring	2
2	W14	Retaining Ring	1	19	M9	O Ring	1	36	702	Piston	1
3	M4	O Ring	1	20	W6	Screw-plug	1	37	M12	Sealing Gasket	1
4	813	Piston Cover	1	21	M16	O Ring	1	38	W2	Strengthened Piece	1
5	M5	O Ring	1	22	M6	O Ring	1	39	J1	Screw	1
6	808	Fuel Return Piston	1	23	706	Shaft Sleeve	1	40	J2	Screw	2
7	812	Fuel Return Thimble	1	24	M14	IDI-9*19*8	1	41	W15	Vent Cover	1
8	W9	Fuel Return Spring	1	25	705	Pump Gasket	1	42	W7	Screw-plug	1
9	707	Hydraulic Intergration	1	26	M15	IDI-9*17*5	1	43	701	Boosting cylinder	1
10	W3	Gasket	3	27	704	Hydraulic Pump	1	44	M18	O Ring	1
11	814	Screw-plug	1	28	W49	Spring	1	45	711	Cover	1
12	W13	Steel Ball	4	29	W16	Piston rod	1	46	Z5	Safe Valve	1
13	W10	Spring	1	30	703	Cover	1	47	Z4	Adaptor	1
14	M8	O Ring	2	31	710	Cover	1	48	Z1	Adaptor	1
15	W5	Screw-plug	1	32	M17	O Ring	1	49	W17	Retaining Ring	1
16	Z23	Adaptor	1	33	M19	Sealing kit	1				
17	815	Screw-plug	2	34	709	Piston	1				

 Boosting System Drawings  
 Picture B

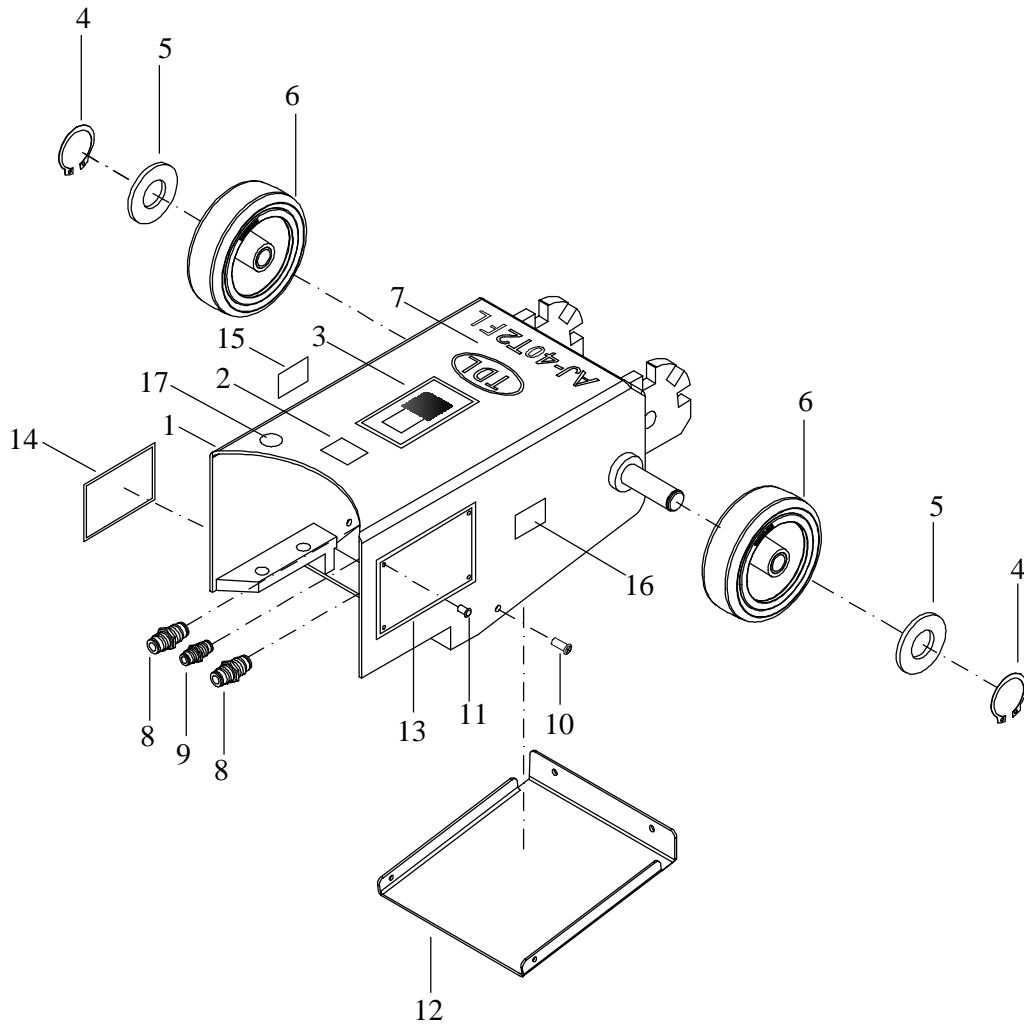
## Oil Cylinder(40T2FL-2)



Code	No.	PART NAME	QTY	Code	No.	PART NAME	QTY	Code	No.	PART NAME	QTY
1	F014	Tube for Oil Tank	1	13	F012	20FL Piston	1	25	M26	O Ring	1
2	Z20	Adaptor	1	14	ZS8	40FL Wearing Ring	1	26	F006	Cover of Oil Tank	1
3	Z19	Adaptor	1	15	HS6	Glyd Ring	1	27	W42	Gasket	4
4	M9	O Ring	1	16	F011	20FL Oil Cylinder	1	28	J27	Screw	4
5	W6	Screw-plug	1	17	ZG7	20FL Wearing Ring	1	29	V005	Short Extension Rod	1
6	Z21	Adaptor	2	18	H55	Dustband	1	30	J5	M8 Spring Gasket	1
7	Z1	Adaptor	2	19	M24	O Ring	1	31	J7	Screw	1
8	J19	M8 Bolt	2	20	F010	40FL Oil Cylinder	1	32	W5	Screw-plug	1
9	W43	Handle FLS	1	21	ZG8	40FL Wearing Ring	1	33	M8	O Ring	1
10	F004	40FL Bottom	1	22	H90	Dustband	1	34	Q13	Windpipe	1
11	ZS7	20FL Wearing Ring	1	23	M25	O Ring	2				
12	HS7	Glyd Ring	1	24	F013	Oil Tank	1				

 Oil Cylinder Drawings  
 Picture C

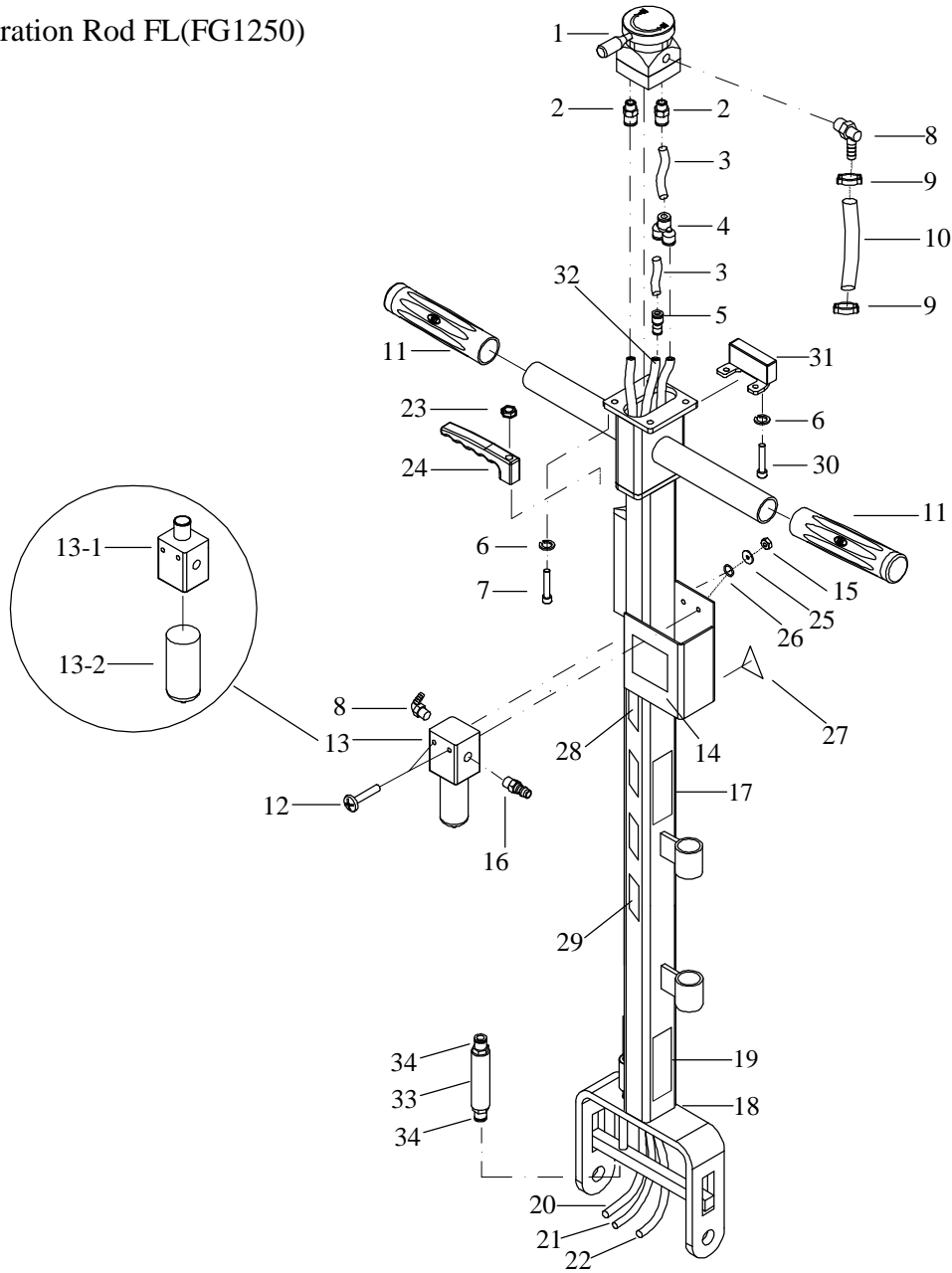
## Frame(40T2FL-2)



Code	No.	PART NAME	QTY	Code	No.	PART NAME	QTY
1	F007	Frame	1	10	J9	Screw	4
2	B2	Label	1	11	J11	Nail	4
3	B23	Label	1	12	F008	Protected Plate	1
4	J10	Outer Retainer Ring	2	13	B29	Nameplate	1
5	N010	Truckle Gasket	2	14	B24	Label	1
6	W44	Truckle	2	15	B7	Label	1
7	B30	Label	1	16	B25	Label	1
8	Z25	Adaptor	2	17	B10	Label	1
9	Z24	Adaptor	1				

Frame Drawings  
Picture D

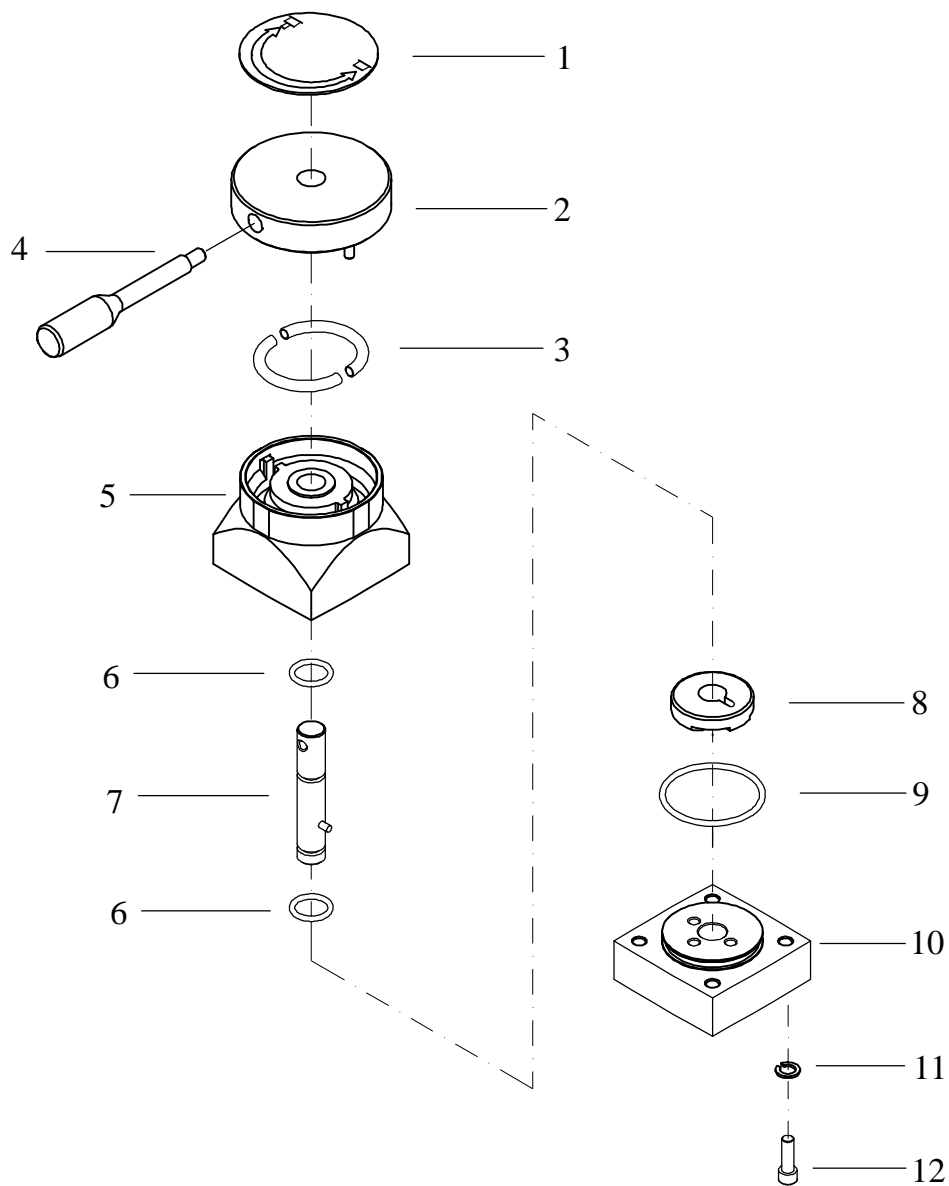
## Operation Rod FL(FG1250)



Code	No.	PART NAME	QTY	Code	No.	PART NAME	QTY	Code	No.	PART NAME	QTY
1	TV-04	Hand Valve	1	13	W24	Filter	1	23	J19	M8 Bolt	1
2	Z13	Adaptor	2	13-1	W24-1	Valve Body	1	24	NG3	Handle	1
3	Q21	Windpipe	2	13-2	W24-2	Glass	1	25	J16	Spring Gasket	2
4	Z16	Adaptor	1	14	B13	Filter Instruction	1	26	J15	Gasket	2
5	Z15	Adaptor	1	15	J17	M5 Bolt	2	27	B17	Label	1
6	J15	Spring Gasket	3	16	I4020	Adaptor	1	28	B15	Label	2
7	J14	Screw	1	17	B26	Label of Caution	1	29	B16	Label	6
8	Z12	Adaptor	2	18	FG1	Frame of Operation Rod FL	1	30	J12	Screw	2
9	J20	Lock Code	2	19	B27	Instruction	1	31	NG4	Bumper of operation rod	1
10	Q4	Oil Pipe	1	20	Q21	Windpipe	1	32	Q25	Windpipe	1
11	W25	Handle Cover	2	21	Q24	Windpipe	1	33	TV5	Oil mist resistance pot	1
12	J13	Screw	2	22	Q26	Windpipe	1	34	Z14	Adaptor	2

 Operation Rod Exploded View  
 Picture E

## Hand Valve(TV-04)



Code	No.	PART NAME	QTY	Code	No.	PART NAME	QTY
1	B18	Label	1	8	TV1	Valve Core	1
2	TV2	Cover of Hand Valve	1	9	M4	O Ring	1
3	W29	Return Spring of Hand Valve	2	10	TV4	Conversion Base	1
4	W27	Controlling Handle	1	11	J15	Spring Gasket	1
5	TV3	Cover of Reversing Valve	1	12	J21	Screw	1
6	M21	O Ring	2				
7	W26	Shaft	1				

 Hand Valve  
 Picture F