

Model:FPL-0.5T

INSTRUCTION MANUAL 0.5T TRANSMISSION JACK



IMPORTANT: PLEASE READ THESE INSTRUCTIONS CAREFULLY. NOTE THE SAFE OPERATIONAL REQUIREMENTS, WARNINGS AND CAUTIONS.

1. Forward

This jack is a removal hydraulic one that with the following advantage compact construction:light in weight,long lift range,fast in lift,replaceable in connection part,firmly and reliable in connection of ADT and so on.

It can be used when assembling and disassembling the removal parts and structural parts which need to be lifted,descended transported. It is the ideal tool for assembling and repairing in motor repair shop,mobile shop.

2. Main specifications

Rated load(kg)	Min height of saddle (mm)	Max height of saddle (mm)	Net weight(kg)	Dimensions(mm)
500	855	1760	54	520*230*790

3. Safety instructions

WARNING! Ensure all preliminary checks are carefully carried out before use of jack.

Ensure use of genuine parts only. Non authorised parts may be dangerous and will invalidate the warranty.

WARNING! Use jack on level and solid ground. Ensure the floor over which the jack will be transported is swept clean.

DANGER! DO NOT use on tarmacadam, or any other soft surface as jack may sink or topple.

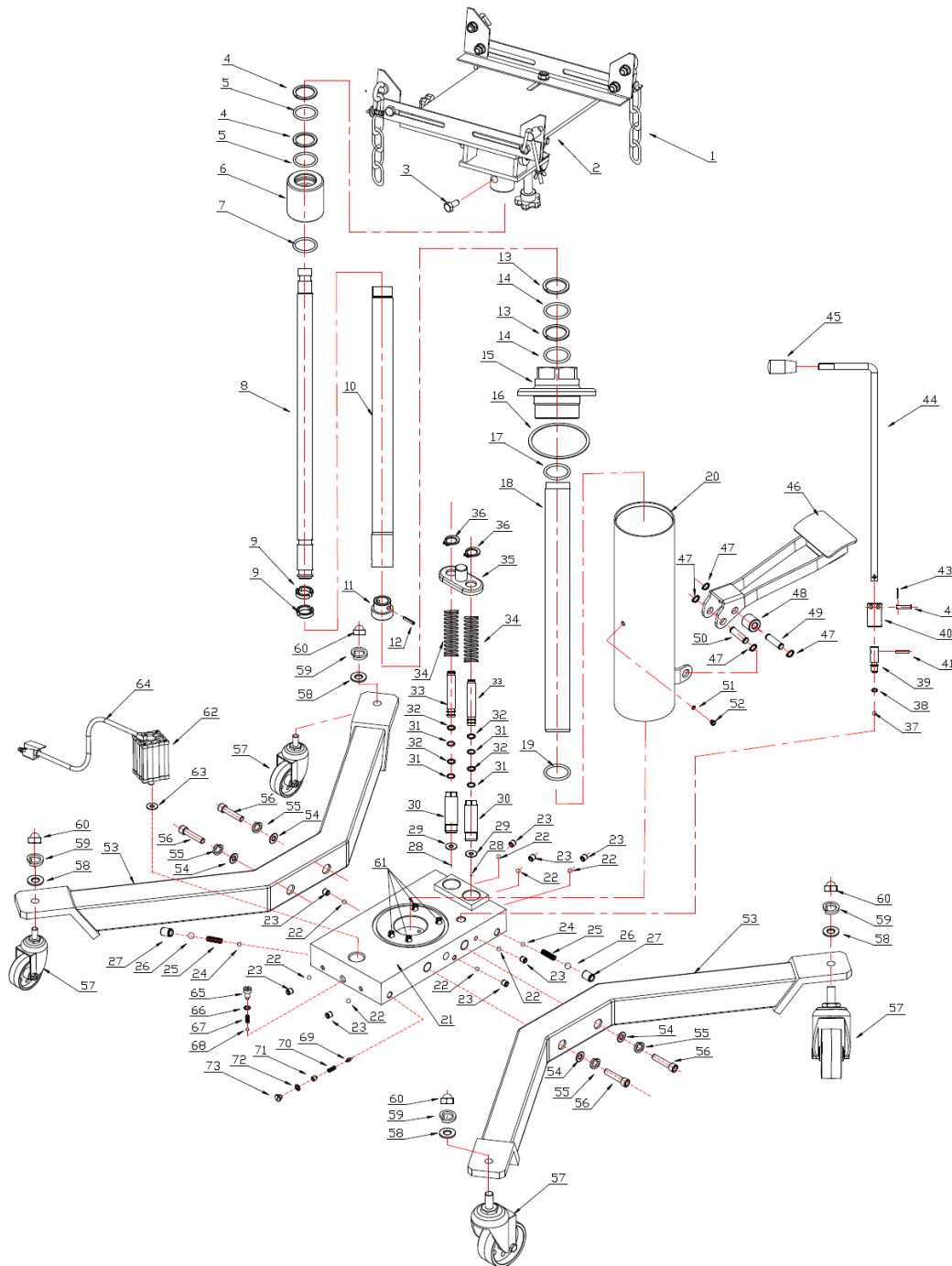
DANGER! If jack tips or leans STOP WHAT YOUR ARE DOING. MOVE QUICKLY TO A SAFE DISTANCE.

- Use jack in an adequate working area for its function, keep area clean & tidy and free from unrelated materials. Ensure there is adequate lighting.
- Before use ensure the gearbox weight and size does not exceed the capacity of the jack.
- Ensure the vehicle is raised and stabilised at the correct height before attempting to move the jack under the vehicle.
- Keep all unauthorised persons away from the jack during lifting and lowering and when in transit.
- Maintain correct balance and footing. Ensure the floor is not slippery and wear non slip shoes.
- Remove ill fitting clothing. Remove ties, watches, rings, and other loose jewellery, and contain and/or tie back long hair.

WARNING! DO NOT operate jack if any parts are damaged or missing.

- DO NOT exceed the rated capacity of the jack.
- DO NOT allow untrained persons to operate the jack.
- DO NOT place any part of your body within or under the jack during use.
- DO NOT raise or lower vehicle lifting platform whilst the transmission jack is being used.
- DO NOT transport the jack, with or without a load, with the saddle in the raised position.
- DO NOT get jack wet or use in damp or wet locations or areas where there is condensation.
- DO NOT operate the jack when you are tired, under the influence of alcohol, drugs and so on.
- DO NOT lift or support vehicles with jack and do not use jack as a load sustaining device.
- DO NOT use jack for any purpose other than removal, transportation, installation of transmissions.
- DO NOT move jack without suitable restraint on the load.
- DO NOT make any modifications to the jack, and DO NOT adjust or tamper with safety valve.
- DO NOT remove any labels from the jack. If labels are damaged or unclear replace them.
- DO NOT use brake fluid to top up hydraulic unit. Use Sealey hydraulic oil only.
- Use a qualified person to lubricate and maintain the jack.
- Before storing in safe area, ensure all parts are clean, free of grease and oil (especially saddle).
- Lower saddle to the lowest position.

4. Main construction



PART NO	DESCRIPTION	QTY	PART NO	DESCRIPTION	QTY
1	Chain	2	38	O-Ring	1
2	Upper unit	1	39	oil return valve	1
3	Screw	1	40	oil return valve coat	1
4	Nylon cotter washer	2	41	round pin	1
5	O-Ring	2	42	round pin	1
6	Small top cap	1	43	Cotter pin	1
7	O-Ring	1	44	Oil return handle	1
8	Piston rod	1	45	Oil return handle coat	1
9	Piston ring	2	46	Foot pedal	1
10	Middle cylinder	1	47	retainer ring	4
11	Piston	1	48	roller wheel	1
12	Piston pin	1	49	roller wheel pin	1

13	Nylon cotter washer	2	50	Pin roll	1
14	O-Ring	2	51	O-Ring	1
15	Big top cap	1	52	Screw	1
16	Nylon washer	1	53	Bottom studs	2
17	O-Ring	1	54	Washer	4
18	Cylinder	1	55	Spring washer	4
19	Cylinder washer	1	56	Screw	4
20	Coat	1	57	Caster Wheel	4
21	Base	1	58	Washer	4
22	Steel ball	8	59	Spring washer	4
23	Set screw	8	60	Round nut	4
24	Steel ball	2	61	Dust ring	4
25	Spring	2	62	Air pump	1
26	Steel ball	2	63	Washer	1
27	Set screw	2	64	Air horse	1
28	Steel ball	2	65	Set screw	1
29	Pump washer	2	66	Washer ring	1
30	Pump body	2	67	Spring	1
31	O-Ring	4	68	Steel ball	1
32	Nylon cotter washer	4	69	Cone valve	1
33	Pump core	2	70	Spring	1
34	Foot pedal spring	2	71	Pressure adjust screw	1
35	Foot pedal spring seat	1	72	O-ring	1
36	Retainer ring	2	73	Screw	1
37	Steel ball	1			

5. Operation instruction

WARNING! Before use ensure you have read, understood and apply Section 3 safety instructions.

5.1. POSITIONING JACK BENEATH LOAD.

5.2. LOWERING THE LOAD.

5.3. TRANSPORTING THE LOAD.

5.4. RE-INSTALLING A GEARBOX.

6. Maintenance

IMPORTANT: Only fully qualified personnel should attempt maintenance or repair.

6.1. When the jack is not in use, the saddle must be in the lowest position to minimise ram and piston corrosion.

6.2. Keep the jack clean and wipe off any oil or grease. Lubricate all moving parts with acid free oil.

6.3. The oil cylinder is a sealed unit and must not be accessed. For service contact your authorised dealer.

WARNING! Only a good quality Jack oil must be used, DO NOT use brake fluid.

6.4. Before each use, follow the pre-check list to ensure components are in good working order. If any suspect item is found remove jack from service and take necessary action to remedy the problem.

DO NOT use the jack if you believe it has been subjected to an abnormal load or shock. If in doubt contact your local service agent.

6.5. Periodically check the pump piston and piston rod for signs of corrosion. Clean exposed areas with a clean oiled cloth.