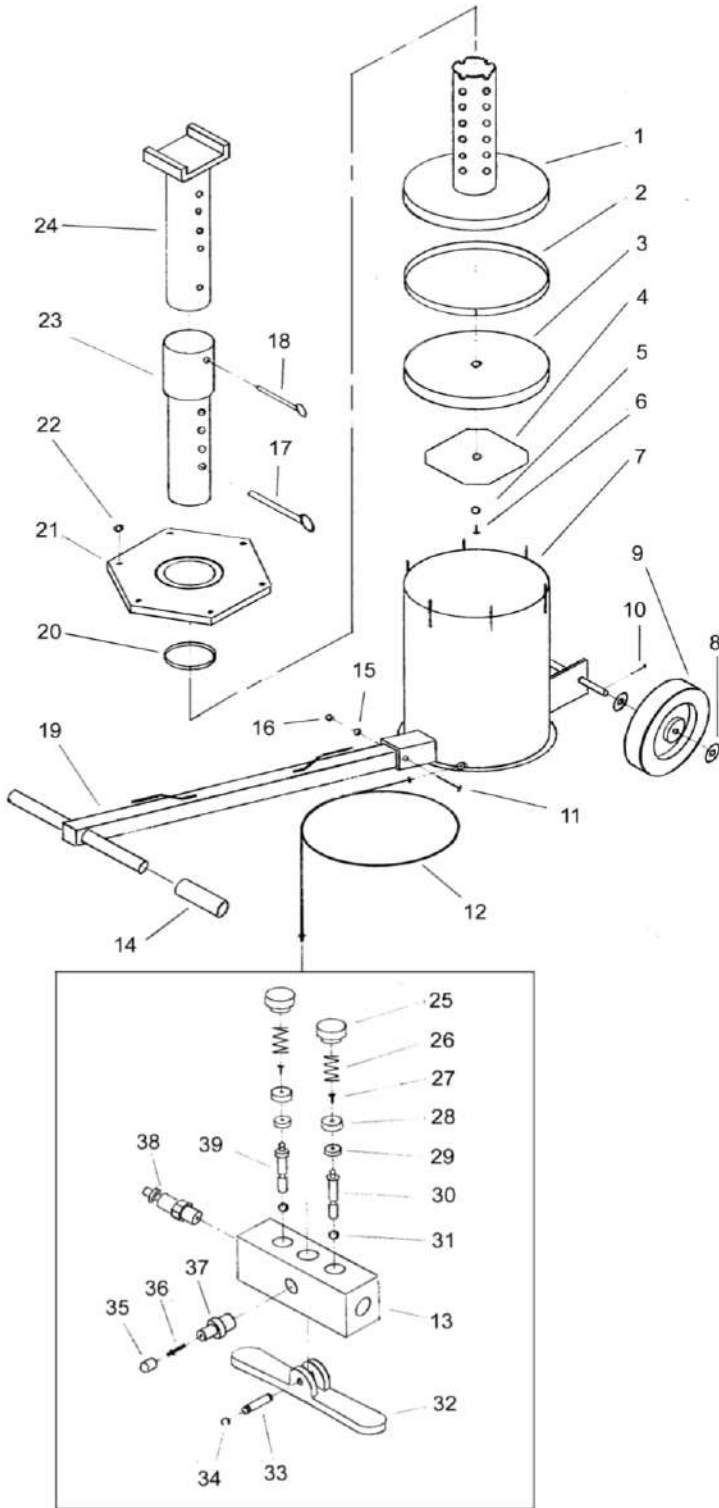


EXPLODED DRAWING AND PARTS LIST



NO.	DESC.	QTY.
1	Low Post	1
2	Gilding Ring	1
3	Seal Ring	1
4	Washer	1
5	O-Ring 16x2.4	1
6	Bolt M12x25	1
7	Air Cylinder Set	1
8	Washer 20	4
9	Wheel	2
10	Pin 5x30	2
11	Bolt M8x60	1
12	3/8" Air Hose Set	1
14	Handle Grip	2
15	Washer 8	1
16	Nut M8	1
17	Locking Pin	2
18	Safety Pin	1
19	Handle Assembly	1
20	Guiding Ring	1
21	Cap Set	1
22	Nut M16	6
23	Exploded Post	1
24	Upper Post	1
13	Air Valve Base	1
25	Cap	2
26	Spring	2
27	Bolt M3x6	2
28	Ring	2
29	Seal Washer	2
30	Valve Core	1
31	Ring 2.8x1.8	2
32	Pad	1
33	Pin	1
34	Retaining Ring	2
35	Cap	1
36	Valve Stem	1
37	Coupler	1
38	Coupler	1
39	Valve Core	1
40	Optional 45" Extension	

Notes

Part number:

#6. Bolts and nuts must be properly tightened/torqued.

#7. Make sure each air Cylinder has plenty of grease inside.

#19, 23, 24. No paint!

#7, 21. Need better paint job.

Flema
Products Ltd

New Product

WJ-1095

FLEMA PRODUCTS LTD Model WJ-1095

All of our Air Jacks are combination Jack/Safety stands. Their features give you POWER, Speed, and SAFETY in ONE convenient operation. The heavy-duty Model WJ-1095 was specifically designed for high-reach applications, such as the new High Clearance sprayers!

Optional 53" extension, (not shown) give the unit a final lifting height of 95"!!



SPECIFICATIONS

Height: Lowest (without extensions)..... 7 3/4"
 High (extensions added)..... 52"
 Optional Long Extension..... 53"
 Short Extension..... 7"
 Ram Travel..... 11 1/2"
 Safety Pin Positions..... 3
 Base Diameter..... 13 1/2"

Weight (single) 150lbs
 Capacity (single) 10T

Air Pressure (PSI)	Lifting Capacity (lbs)
100	10,000
120	12,000
140	14,000
160	16,000
180	18,000
200	20,000